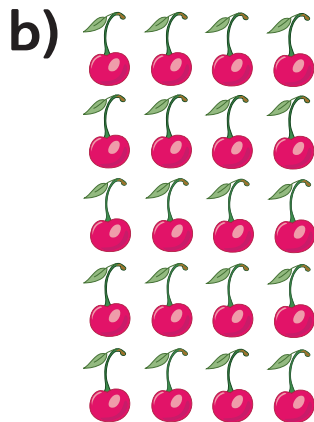


Think together

1 Split these into quarters.

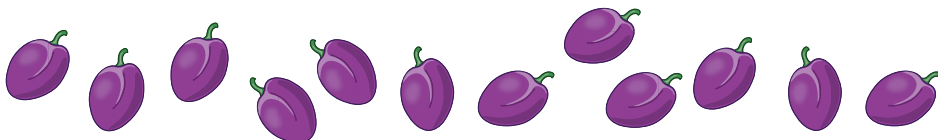


orange is a quarter of 4 oranges.



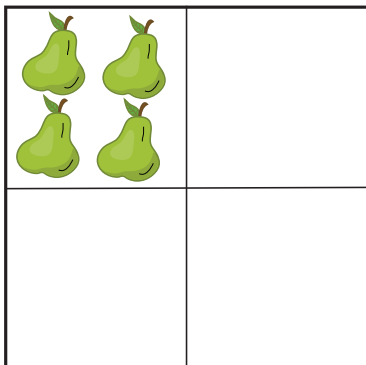
cherries is a quarter of 20 cherries.

2 a)



A quarter of plums is plums.

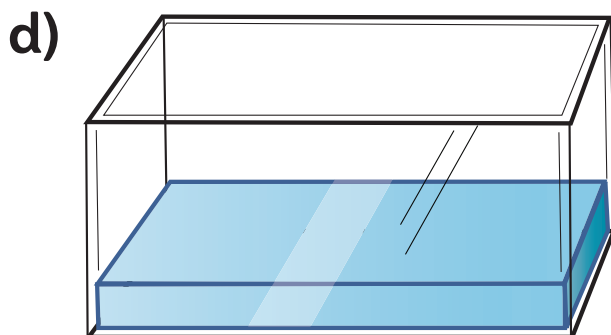
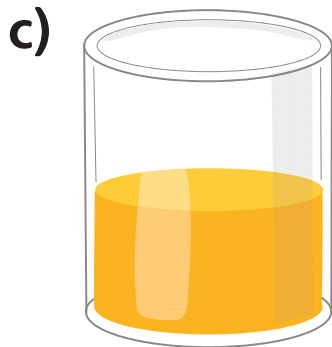
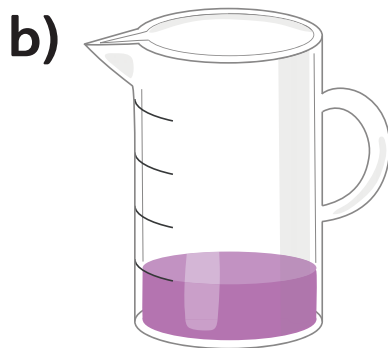
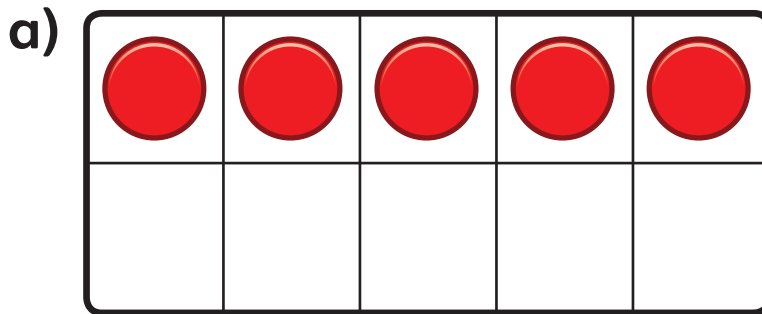
b) A quarter is 4 pears. What is the whole?



The whole is pears.

3 Which of these are a quarter full?

Which are more than a quarter full?



I wonder how many quarters make a whole.

